

---

# UNDP Impact Evaluation Baseline Survey

---

*Climate Information for Resilient  
Development in Africa (CIRDA)*

Babatunde Abidoye (PhD)



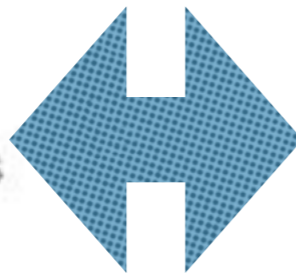
# Identifying Stakeholders



Empowered lives.  
Resilient nations.

## End Users

- Vulnerable Farmers
- Vulnerable Communities
- Policy Makers
- Private Sector



Baseline Survey aims at understanding vulnerable farmers and communities.

## Questions to Ask

- What are end-user needs?
- What current assets do we have?
- How is weather information currently used?
- What are the media habits of our end users?
- Above all, it's important to empathize (ie. Understand demographics, cultural, social, economic optics, literacy, language, media use, trust)



GPS locations for  
geo-spatial  
information and  
analysis

Household  
information

Hazard  
identification by  
community

Baseline Survey

Past experience on EWS,  
climate change,  
communications and  
responses

Information to estimate  
outcomes of interest

Estimate  
Fish Catch  
rate

Estimate  
Agricultural  
Yields

Estimate  
Agricultural  
profit

Estimate  
Livestock  
profit  
and  
yields





## Early Warning System

- Product development -
  - Planting season information
  - Rainfall information
  - Temperature information
  - Hazard information- flooding; drought, etc
  - Pest/disease infestation information
- Communication of the product
  - Government agency
  - SMS message
  - Newspaper
  - TV
  - Radio
  - e.t.c

## Outcome of interest:

- Improved yield/profit of farmers
- Improved revenue for fishers
- Optimal adaptation strategy
- Community resilience to hazards



## Factors affecting the impact of the EWS product on the beneficiary

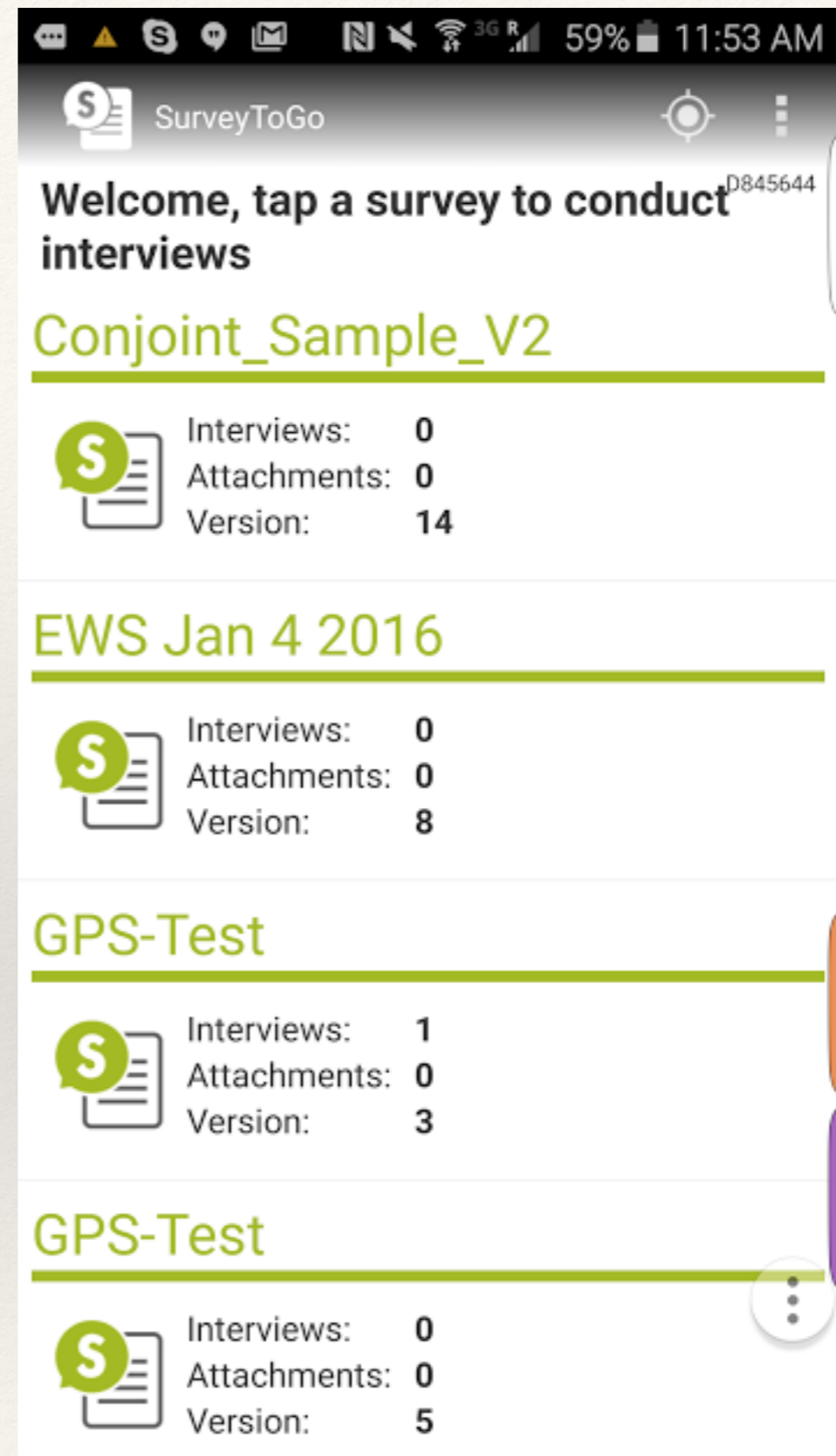
- gets the EWS information on time to use and process
- gets the information on time to use **but does not** trust/use the information
- Never gets the information or does not get the information on time to use
- information is NOT accurate



- Links product to outcomes to quantitatively estimate the value of the product by comparing outcomes of beneficiaries and nonbeneficiary of a particular product
- taking into consideration that the impact may be conditional on the communication channel

# Survey Methodology

- ❖ Computer-assisted personal interviewing (CAPI): reduces data entry mistakes and improves the efficiency of survey enumeration.
- ❖ Representative sample that provides credible results



**Countries Completed**

**Tanzania (Country report draft)**

**Uganda (Country report draft)**

**Liberia (Draft Report)**

**Sierra Leone (survey completed)**

**Zambia (Survey completed)**

**Sao Tome (Survey team in place)**

**Countries not started**

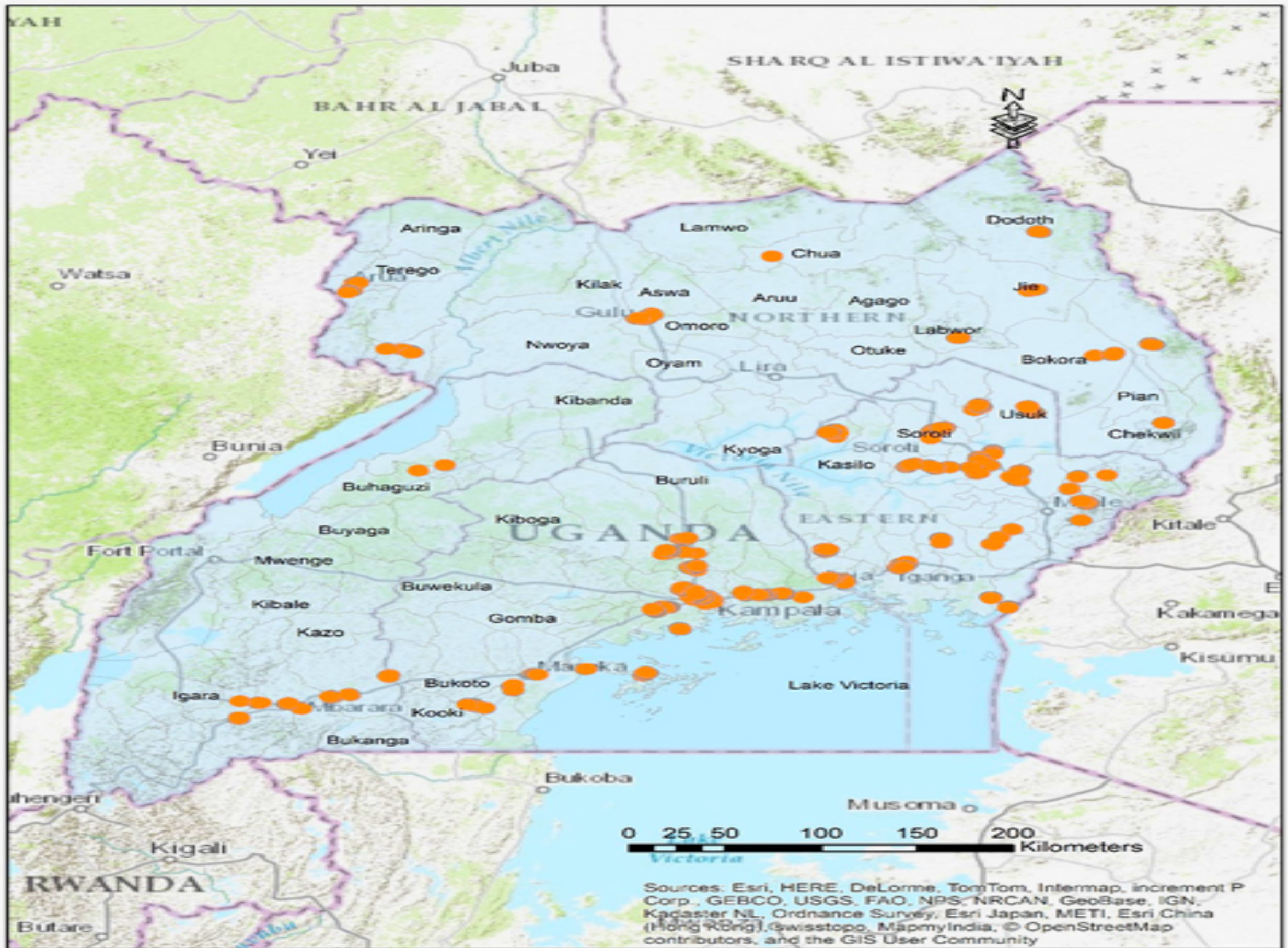
**Burkina Faso**

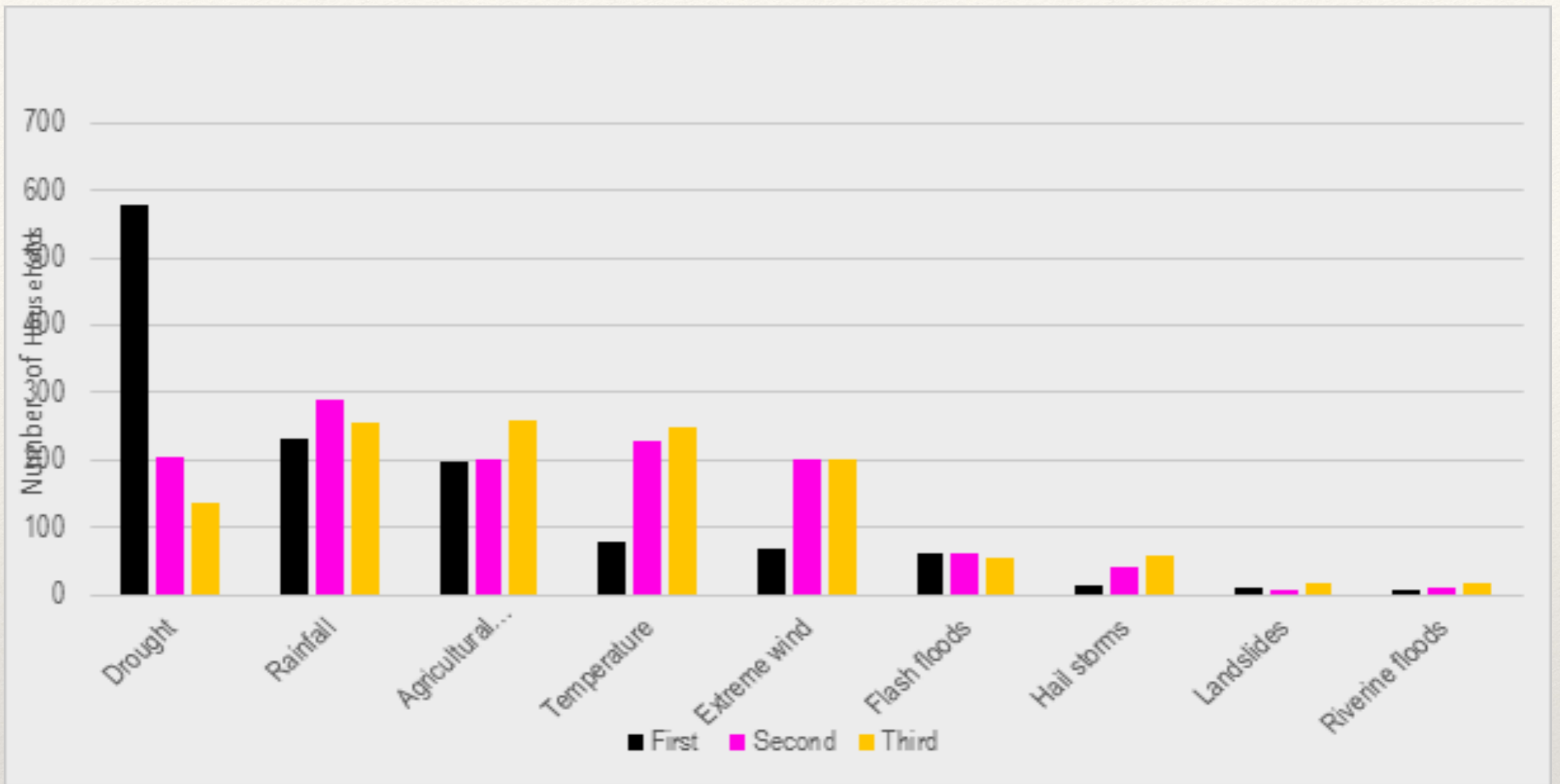
**Benin**

**Gambia**

**Ethiopia**

**Malawi**

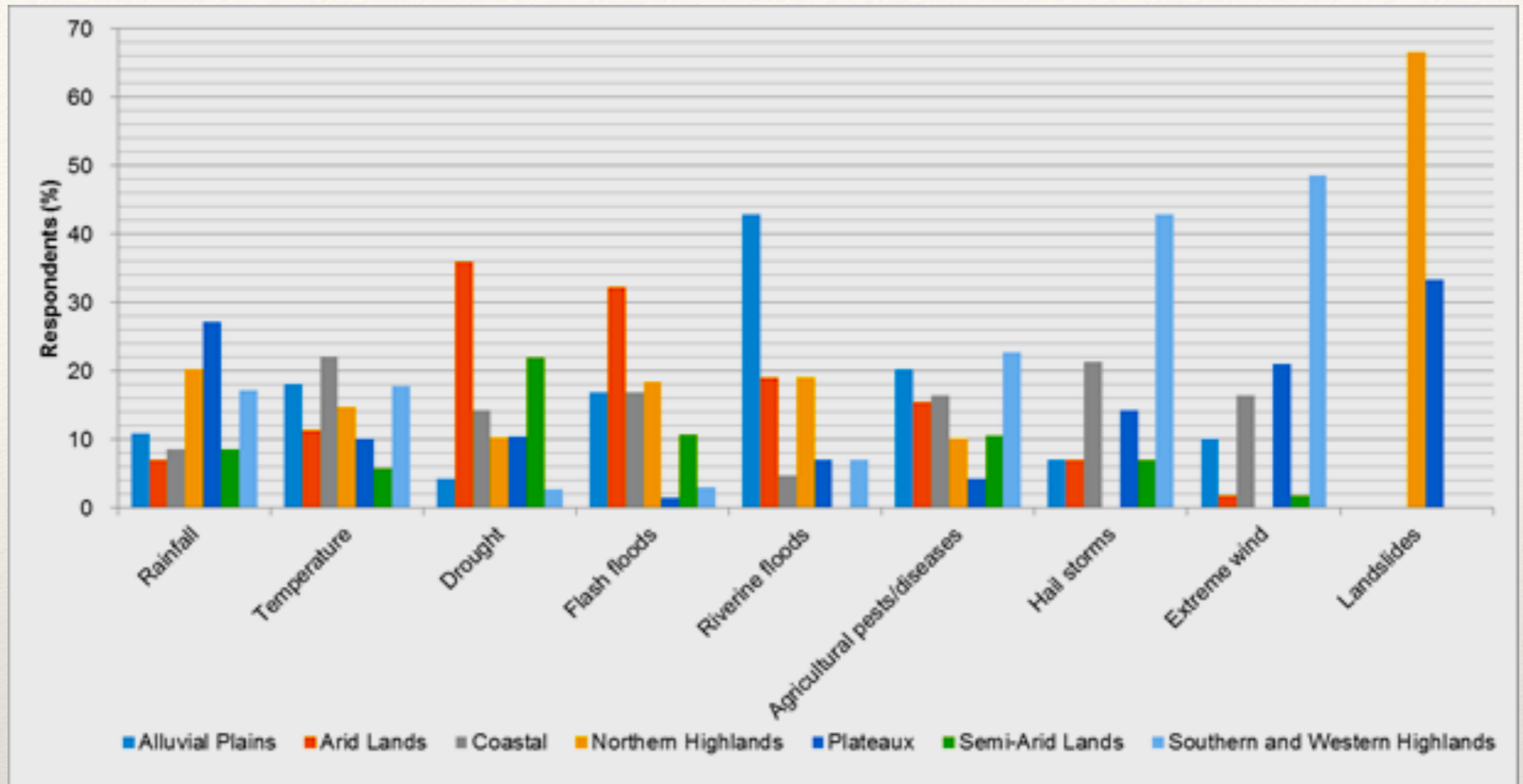




Uganda

Hazard information





# Tanzania

Percentage of Respondents reported various climate hazards in AEZ

From where did you first get this warning?	TEMPERATURE	HIGH LOW RAIN FALL	DROUGHT	FLOODING	PESTS AND DISEASES	SEVERE WINDS	HAILSTORM	RIVERINE FLOODING	LANDSLIDES	TOTAL
Government Agency (e.g. extension officer, police)	8	44	8	4	13	3			1	<b>81 (7.8%)</b>
Newspaper	6	28	8	5	3	4			1	<b>55 (5.3%)</b>
Radio	84	296	187	67	47	46	2	3	14	<b>746 (72.2%)</b>
TV	10	17	6	3	6	9	1			<b>52 (5%)</b>
SMS Message										<b>0%</b>
Local community (flags, sirens etc.)	7	23	15	8	5	5		4		<b>67 (6.5%)</b>
NGO	3									<b>3 (0.3%)</b>
Church/Mosque/ Temple		7	10	5	1	3				<b>26 (2.5%)</b>
Social Media	2		1							<b>3 (0.3%)</b>
<b>TOTAL</b>	<b>120</b>	<b>415</b>	<b>235</b>	<b>92</b>	<b>75</b>	<b>70</b>	<b>3</b>	<b>7</b>	<b>16</b>	<b>1033 (100%)</b>

Uganda

Source of Warning

<b>Agro-ecological zone</b>	<b>Radio</b>	<b>TV</b>	<b>Newspaper</b>	<b>Other farmers /fishers</b>	<b>Traditional methods</b>	<b>None</b>
Alluvial Plains	75.1	0.9	0	0	12	12
Arid Lands	51.3	0.8	0	0.3	0.3	47.4
Coastal	42.9	0	0	0.7	17.1	39.4
Northern Highlands	73.9	2.2	0.4	4.3	1.4	17.8
Plateaux	66.8	0.3	0.3	0.3	2	30.2
Semi-Arid Lands	56	0	0	0.4	1.2	42.4
Southern and Western Highlands	84.6	1.4	0	3.5	1.4	9.1
<b>Total</b>	<b>63.5</b>	<b>0.8</b>	<b>0.1</b>	<b>1.3</b>	<b>4.7</b>	<b>29.5</b>

# Tanzania

Early Warning Information  
Sources by Agro-ecological  
zone

Medium for weather information	Frequency	Percentage
Radio	950	51.40%
TV	77	4.20%
Other farmers/fishers	272	14.70%
Traditional methods	275	14.90%
Newspaper	84	4.50%
Others	192	10.4%
<b>TOTAL</b>	<b>1850</b>	<b>100%</b>

Uganda

Most reliable  
medium for weather  
information

<b>USEFULNESS OF EW RECOMMENDATION</b>	<b>TEMPERATURE</b>	<b>HIGH LOW RAINFALL</b>	<b>DROUGHT</b>	<b>FLOODING</b>	<b>PESTS AND DISEASES</b>	<b>SEVERE WINDS</b>	<b>HAILSTORM</b>	<b>RIVERINE FLOODING</b>	<b>LANDSLIDES</b>	<b>TOTAL</b>
<b>Not at all</b>	1	8	8							<b>17 (2.8%)</b>
<b>A little</b>	28	90	90	20	21	9	1		6	<b>265 (43.7%)</b>
<b>Mostly</b>	11	52	52	23	17	11		3	2	<b>171 (28.2%)</b>
<b>A lot</b>	10	43	43	22	10	17	1	5	3	<b>154 (25.4%)</b>
<b>TOTAL</b>	<b>50</b>	<b>193</b>	<b>193</b>	<b>65</b>	<b>48</b>	<b>37</b>	<b>2</b>	<b>8</b>	<b>11</b>	<b>607 (100%)</b>