



CANADA-UNDP  
Climate Change Adaptation Facility

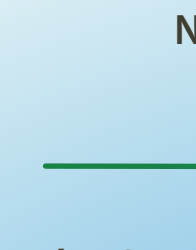
# COMPARATIVE ANALYSIS ON GENDER-RESPONSIVE APPROACHES TO CLIMATE CHANGE ADAPTATION

UNDER THE UNDP-CANADA CLIMATE CHANGE ADAPTATION FACILITY(CCAF)



## CLIMATE CHANGE IMPACTS MEN AND WOMEN DIFFERENTLY

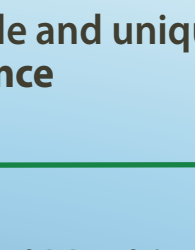
Women are often recognized as more vulnerable since they are:



DEPENDENT ON CLIMATE SENSITIVE NATURAL RESOURCES FOR THEIR LIVELIHOODS



NOT SUFFICIENTLY REPRESENTED IN DECISION MAKING PROCESSES

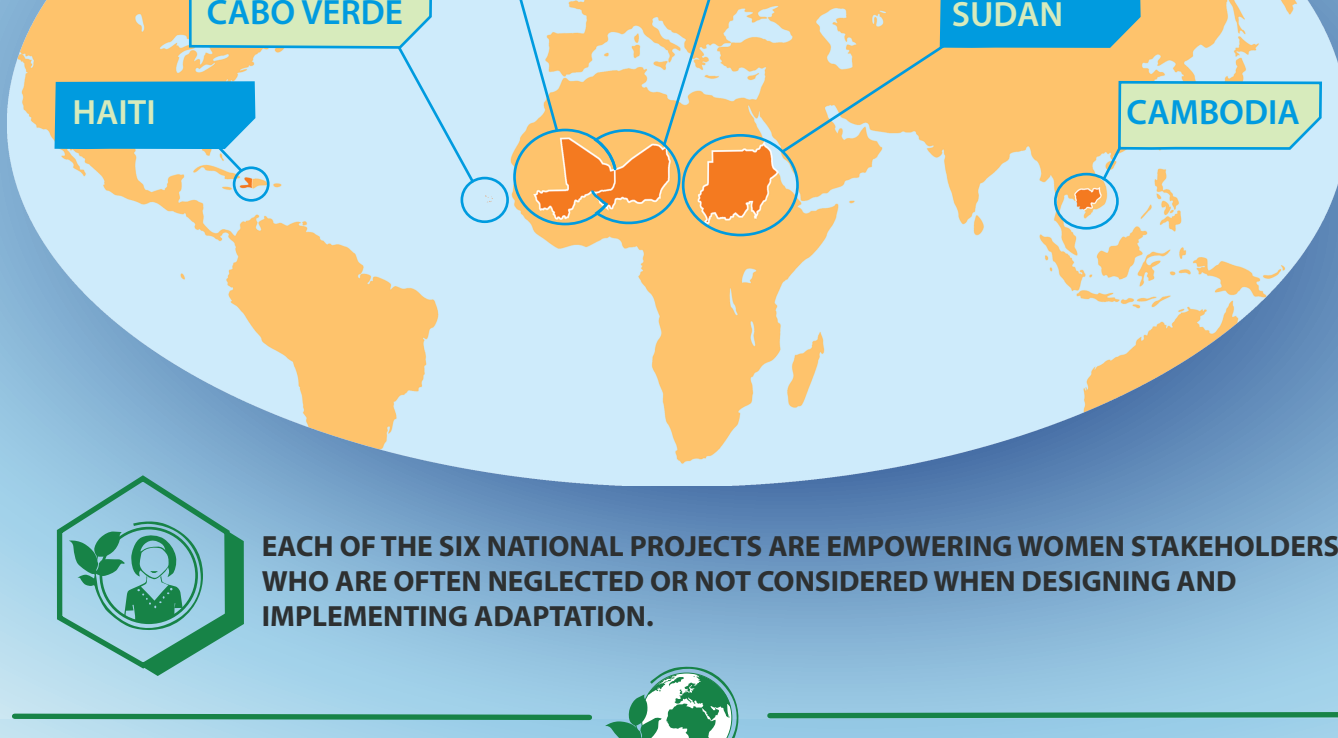


LIVE IN CONDITIONS OF SOCIAL EXCLUSION

Nonetheless, both men and women have valuable and unique knowledge, information and experience



The Canada-UNDP Climate Change Adaptation Facility (CCAF) implements GENDER-RESPONSIVE ADAPTATION APPROACHES across six countries



EACH OF THE SIX NATIONAL PROJECTS ARE EMPOWERING WOMEN STAKEHOLDERS WHO ARE OFTEN NEGLECTED OR NOT CONSIDERED WHEN DESIGNING AND IMPLEMENTING ADAPTATION.

## UNDERSTANDING THE GENDER-RELATED CONTEXT ACROSS COUNTRIES

### HOW DO WOMEN AND MEN EXPERIENCE CLIMATE CHANGE IMPACTS?

The tables below provide a quick snapshot of this context across the six CCAF countries, focusing on the relationship between both men and women and the specific physical, social, economic and environment conditions. Important aspects emerging from this analysis are the different roles of men and women, their different levels of access to resources, and the differentiated knowledge and capacity held by each group.

ROLE WITHIN SOCIETY	WOMEN	MEN
HAITI		
CABO VERDE		
MALI		
NIGER		
SUDAN		
CAMBODIA		

LEGEND	ROLE & RESPONSIBILITY WITHIN SOCIETY	Water collection and other domestic tasks	Farming market crops	Small scale gardening	Small trading activities	Economic activity	Illegal extraction of sand from beaches	Rear livestock	Non-Timber Forest Products
--------	--------------------------------------	---	----------------------	-----------------------	--------------------------	-------------------	---	----------------	----------------------------

ACCESS TO RESOURCES	WOMEN	MEN
HAITI		
CABO VERDE		
MALI		
NIGER		
SUDAN		
CAMBODIA		

KNOWLEDGE AND CAPACITY	WOMEN	MEN
HAITI		
CABO VERDE		
MALI		
NIGER		
SUDAN		
CAMBODIA		

### LINKS TO CLIMATE CHANGE

#### HAITI

Haiti is an island nation susceptible to storms. 66% of the population are employed in the agriculture sector. It is a country highly vulnerable to climate change, with acute poverty, rapid population growth and unplanned urbanization.

**Women are responsible for farming and domestic practices, but have limited economic, political and decision-making power to adapt**

**Climate Impacts:**  
Unpredictable rainfall and extreme events will lead to damage and destruction of crops, livestock and infrastructure

#### CABO VERDE

In Cabo Verde most of the population depends directly or indirectly on agriculture for livelihoods. Persistent rainfall deficits and limited access to water are common threats.

**Women are primarily for farming and domestic activities, but have limited economic and decision-making power to adopt adaptive practices**

**Climate Impacts:**  
Increasing scarcity of freshwater and drier conditions will lead to lower crop yields and water insecurity

#### MALI

With a very low Human Development Index, Mali's economy is highly dependent on agriculture, though only 14% of the land is considered cultivable.

**Men are forced to migrate to urban areas to find income; Women are forced into small trading activities without full access to resources to enhance productivity**

**Climate Impacts:**  
Climate-induced droughts will lead to reduced crop and livestock production

#### NIGER

As one of the poorest countries in the world, 85% of the population in Niger depends on agriculture for their livelihood, which is primarily rainfed.

**Both Men and Women will be affected by losses in agricultural production; and will face difficulty gardening and with NTFP from resulting forest degradation**

**Climate Impacts:**  
Water scarcity and drought will lead to loss of crop production

#### SUDAN

With a diverse landscape, 60% of the population depends on rain-fed agriculture for their livelihoods; yet this is threatened by rainfall variability and prolonged drought.

**Losses in farming and animal production will affect Men; Limited freshwater resources will affect Women**

**Climate Impacts:**  
Increasing drought conditions and unpredictable rainfall patterns affect agriculture and water availability

#### CAMBODIA

Cambodia is a tropical country where 70-80% of the population depends on agriculture for their livelihoods, which is largely dependent on the monsoon rains.

**Losses in agricultural production will affect Men; With limited access to resources and information, it will be difficult for Women to adapt**

**Climate Impacts:**  
Increasing scarcity of freshwater, rainfall variability, droughts and floods will lead to reduced agricultural production

*n.b. Countries not to scale*

### HOW DO WE ADDRESS THE GENDER-RELATED CONTEXT?

## GENDER-RESPONSIVE ADAPTATION APPROACHES UNDER THE CCAF

[Access Here](#)



### UNDERSTANDING WHAT WORKS

## SUCCESSFUL GENDER-RESPONSIVE ADAPTATION APPROACHES UNDER THE CCAF

[Access Here](#)

