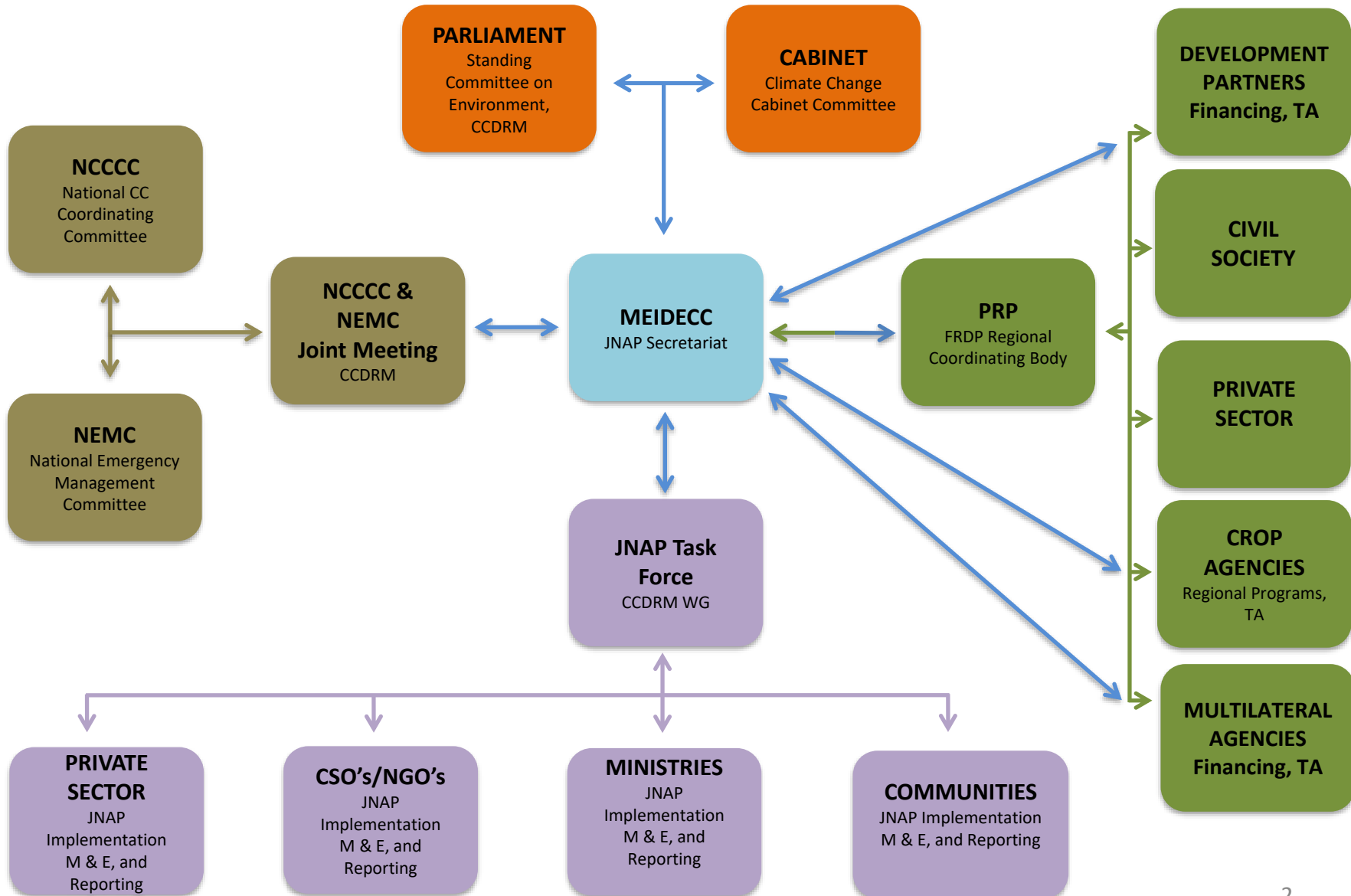


GOVERNANCE & MANAGEMENT



CLIMATE CHANGE AND DISASTER RISK COORDINATION IN TONGA

JNAP Governance Structure



MEIDECC

- Meteorology
- Energy
- Information
- Disaster Management
- Environment
- Climate Change
- Communications

MEIDECC
JNAP Secretariat

JNAP Secretariat
Policy & Planning,
Resources, Coordination

JNAP Task Force

- MEIDECC
- MAFF
- MoF
- MoH
- MoFNP
- MIA
- CSO's
- PRIVATE

JNAP Task Force
CCDRM WG

COORDINATION
Policy, Planning,
Finance, Projects

JOINT MEETING: NCCCC & NEMC

- JNAP Oversight Body
- Joint Secretariat by NEMO & CC Dept.



**NCCCC & NEMC
Joint Meeting
CCDRM**

**COORDINATION
Policy & Planning**

National Climate Change Coordinating Committee [NCCCC]

- CEO Level Oversight Body for Climate Change.
- Mandate oversight on all Climate Change activity.
- Secretariat is Climate Change Dept. supported by the JNAP Sec.

NCCCC

National Climate Change
Coordinating Committee

COORDINATION

Policy & Planning

National Emergency Management Committee [NEMC]

- High-Level Decision Making Body for DRM
- Mandate to coordinate all DRM Activity.
- Secretariat is NEMO

NEMC

National Emergency
Management Committee

COORDINATION

Policy & Planning



Climate Change Cabinet Committee [CCCC]

- Ministerial-Level Decision Making Body
- Endorsement of Policies and Plans
- Transparency

CABINET
Climate Change
Cabinet Committee

COORDINATION
Policy & Planning,
Legislation



PARLIAMENTARY STANDING COMMITTEE

- Political Support
- Constituency support
- Transparency



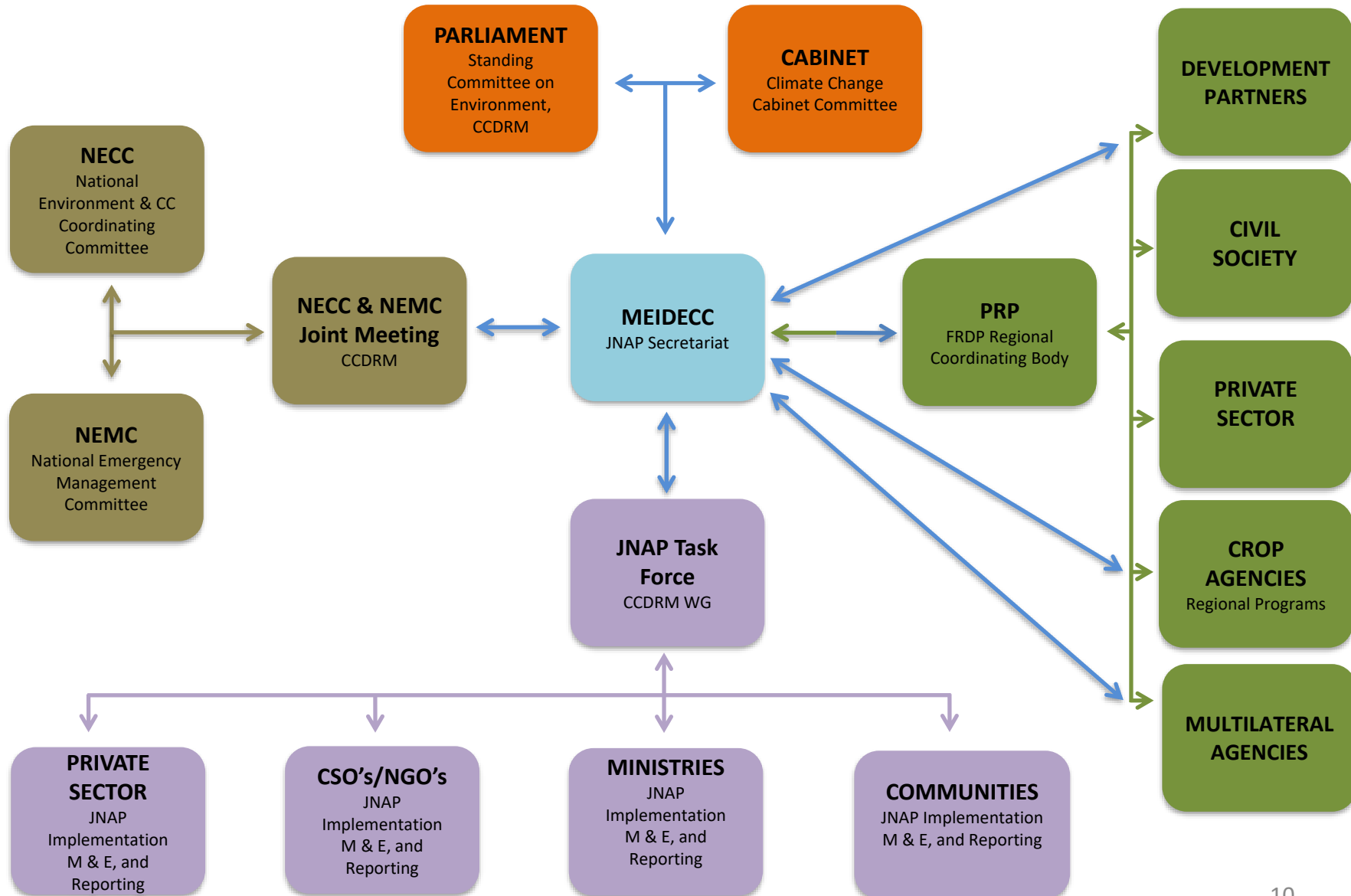
PARLIAMENT

Standing Committee on
Environment, CCDRM

COORDINATION

Policy & Planning,
Legislation

JNAP Governance Structure



CHALLENGES

- **National Entry Point** – All potential external partners must recognize MEIDECC/JNAP Sec as Tonga's National Entry Point for all CCDRM activities
- **Human Resources** – There is still limited number of expertize due to inability to retain personnel (leaving overseas, attracted to higher paid jobs)
- **Financial Resources** – Low national Budget Allocation to Climate Change
- **Committee Membership** – Attendance & Alternate representation of JNAP membership due to overseas travel
- **Mainstreaming & Streamlining** – Mainstreaming CCDRM not as fast as intended due to low number of personnel

MALO 'AUPITO THANK YOU



www.climatechange.gov.to